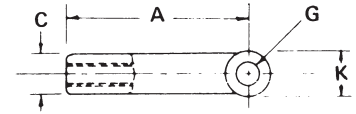
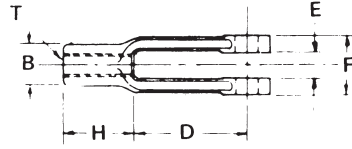
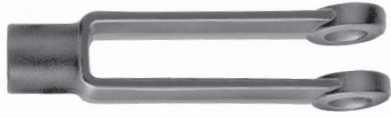




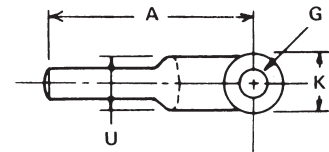
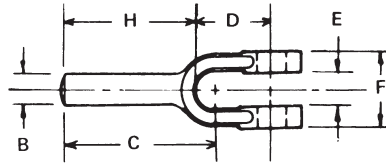
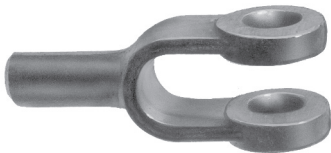
# DROP FORGED YOKE ENDS

## SELF-COLORED DROP FORGED YOKE ENDS



### ADJUSTABLE

Stock No.	Part No.	"T" Tap Size	Dimensions in Inches – Machined									Est. Wt. Per 100 Pcs.
			A	B	C	D	E	F	G	H	K	
51	19505 8	1/4"-28	2"	7/16"	7/16"	1-1/4"	9/32"	5/8"	1/4"	3/4"	1/2"	7.5 Lbs.
52	19510 2	5/16"-24	2-1/4"	1/2"	1/2"	1-7/16"	11/32"	3/4"	5/16"	13/16"	19/32"	10.7 Lbs.
53	19515 7	3/8"-24	2-1/2"	5/8"	5/8"	1-5/8"	7/16"	7/8"	3/8"	7/8"	11/16"	16 Lbs.
54	19520 1	7/16"-20	2-7/8"	23/32"	23/32"	1-7/8"	1/2"	1"	7/16"	1"	13/16"	24 Lbs.
55	19525 6	1/2"-20	3"	13/16"	13/16"	1-7/8"	9/16"	1-1/8"	1/2"	1-1/8"	15/16"	32.2 Lbs.
56	19530 0	5/8"-18	4-15/16"	1-1/16"	1-1/16"	3-11/16"	11/16"	1-3/8"	5/8"	1-1/4"	1-3/16"	80 Lbs.
57	19535 5	3/4"-16	6-1/16"	1-1/4"	1-1/4"	4-9/16"	13/16"	1-5/8"	3/4"	1-1/2"	1-7/16"	135 Lbs.



### PLAIN TYPE

Stock No.	Part No.	Dimensions in Inches – Machined										Est. Wt. Per 100 Pcs.
		A	B	C	D	E	F	G	H	K	U	
61	19705 2	1-3/4"	1/4"	1-19/32"	5/8"	9/32"	5/8"	1/4"	1-1/8"	1/2"	7/16"	4.7 Lbs.
62	19710 6	2"	5/16"	1-7/16"	3/4"	11/32"	3/4"	5/16"	1-1/4"	19/32"	1/2"	7.8 Lbs.
63	19715 1	2-1/8"	3/8"	1-33/64"	27/32"	7/16"	7/8"	3/8"	1-9/32"	11/16"	5/8"	11.1 Lbs.
64	19720 5	2-1/4"	7/16"	1-57/64"	1"	1/2"	1"	7/16"	1-1/4"	13/16"	23/32"	15.1 Lbs.
65	19725 0	2-1/2"	1/2"	1-11/16"	1-1/8"	9/16"	1-1/8"	1/2"	1-3/8"	15/16"	13/16"	23.1 Lbs.
66	19730 4	2-7/8"	5/8"	1-53/64"	1-7/16"	11/16"	1-3/8"	5/8"	1-7/16"	1-3/16"	1-1/16"	43 Lbs.
67	19735 9	3-5/8"	3/4"	2-25/64"	1-11/16"	13/16"	1-5/8"	3/4"	1-15/16"	1-7/16"	1-1/8"	75 Lbs.

## SELF-COLORED SAE CLEVIS PINS FOR YOKE ENDS



Part No.	Shank Diameter	Dimensions in Inches – Machined						Weight Per 100 in Lbs.
		Lengths		Head		Hole		
		Overall	Under Head	O.D.	Thickness	I.D.	*Center	
19305 4	1/4"	55/64"	49/64"	3/8"	3/32"	5/64"	43/64"	1.3
19310 8	5/16"	1-1/32"	15/16"	7/16"	3/32"	7/64"	13/16"	2.3
19315 3	3/8"	1-3/16"	1-1/16"	1/2"	1/8"	7/64"	15/16"	3.7
19320 7	7/16"	1-11/32"	1-3/16"	9/16"	5/32"	7/64"	1-1/16"	5.9
19330 6	1/2"	1-33/64"	1-23/64"	5/8"	5/32"	9/64"	1-13/64"	8.6
19335 1	5/8"	1-13/16"	1-39/64"	13/16"	13/64"	9/64"	1-29/64"	16.2
19340 5	3/4"	2-5/32"	1-29/32"	15/16"	1/4"	11/64"	1-23/32"	27.5

\*From under head

Produced from 1018 cold heading quality wire.

